

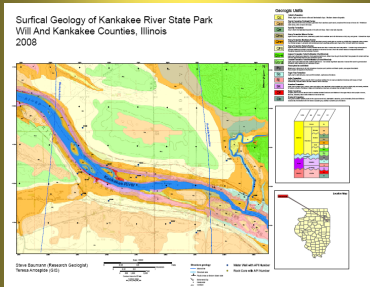
# The Terracreo

Geoscience and Engineering News Source

*Advancing North America's Earth Science and Engineering Research*



Volume 1, Edition 1  
September 2009



Miniaturized version of the geologic map of Kankakee River State Park



Elmer Larson Quarry 2007



Middle Ordovician rock core from Ripon Wisconsin 2006

Produced By:



[www.migeweb.org](http://www.migeweb.org)

## **NEWS**

Welcome to the first newsletter produced by the Midwest Institute of Geosciences and Engineering (MIGE), a non for profit. MIGE is a forward organization that was founded by scientists, not bureaucrats. MIGE attempts to do many similar things as some government institutions, such as research, education, and data collection. Since MIGE is presently privately funded we can produce products and services in a much timely manner by using the latest technology and talent without having to waste resources on administrative heartaches. Since our clients and patrons are the public, not large corporations, we do not spend time or money on useless checklists and corporate redundancies.

MIGE's focus is to educate the public on important issues regarding the earth sciences and engineering. MIGE is a GIS based organization that produces publication on numerous geoscience and engineering issues. The goal of the organization is to educate members and the public on issues such as geologic hazards, water supply, and how to engineer a greener and smarter tomorrow. In order to accomplish this goal MIGE offers publications, workshops, field trips, and tutoring services to the public.

## **EVENTS**

Presently MIGE is holding a raffle to organize a field trip to Matthiessen State Park, Illinois in the Spring of 2010. The field trip will focus on the unique geology of the park and how understanding its unique geologic structure can better help us plan for the future of water and mineral extraction. Plus it is a great place to look at fossils. Tickets are \$2 a piece with cash and prizes. The drawing will be held on December 5th, 2009 at MIGE's headquarters. Anyone over 18 can enter the drawing.

For more information call: **(630) 379-4835** or email [steveb@migeweb.org](mailto:steveb@migeweb.org)

MIGE is presently working on setting up partnerships with schools to conduct lectures and workshops. If you are a teacher interested in such a partnership please contact us as listed above.

## **UPCOMING PUBLICATIONS**

MIGE is currently working on several projects. The focus is mostly the understudied and misunderstood Upper Ordovician in Illinois and the resources that it contains. MIGE will also be working on correlating the geology of Illinois in the subsurface. A pressing need to understand the subsurface is key due to over use and contamination of mainly groundwater resources. The stratigraphy of Illinois' bedrock has not been updated since 1975.

## **MEMBERSHIPS**

MIGE is a membership based organization. We have two types of memberships. We have the Standard Membership which costs \$40 per year. Standard Members get free digital or hard copies of all of our publications for the year. They also receive free admission to events and workshops held for the year. If you have a relevant scientific paper we will be glad to review and publish it for you. Plus a yearly wall calendar and membership cards.

The second type of membership is a Primary Membership which costs \$175 per year and is limited to a maximum of 20 members. Primary Membership includes all of the perks of a Standard Membership plus free access to all publications, works in progress, budgets, board meeting minutes, voting rights, and a user account to access the MIGE website (in progress).

If you would like to be a member all you have to do is ask by contacting the same person listed under events!

# The Terracreo

Geoscience and Engineering News Source

*Advancing North America's Earth Science and Engineering Research*



Volume 1, Edition 1  
September 2009

## **INTERNSHIPS**

MIGE does have an internship program under development which will be in place no later than

November 2009. If you are a future paleontologist, biologist, geologist, or engineer and would like to get a head start please contact Steve as listed under events.

Internships may count towards college credits and work experience. We promise that your internship will be a relevant learning experience. We want to solidify your interest in science not refine your copying or coffee brewing skills. As an intern you will first be shown how MIGE runs as an organization, have access to GIS, and be shown geologic mapping skills not taught in school.

In order to qualify as an intern you must be 18 years or older, enrolled at a college or university (part or fulltime) and be a resident of Illinois, Indiana, Iowa, Kansas, Michigan, Minnesota, Missouri, Ontario, or Wisconsin.

## **WEBSITE**

MIGE has a website at [www.migeweb.org](http://www.migeweb.org) and is planning to expand it greatly in the next several months. If you visit our website and have comments or suggestions, please don't hesitate to contact us. Normal MIGE hours are 9:30AM to 6PM, seven days a week.

---

Produced By:



[www.migeweb.org](http://www.migeweb.org)